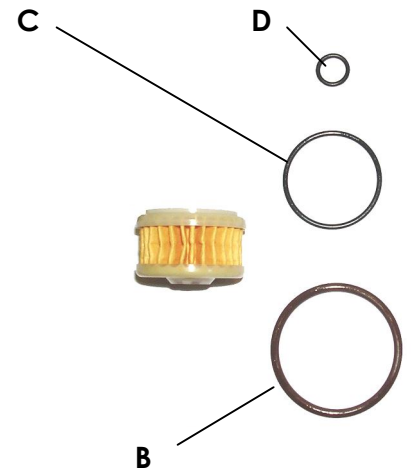
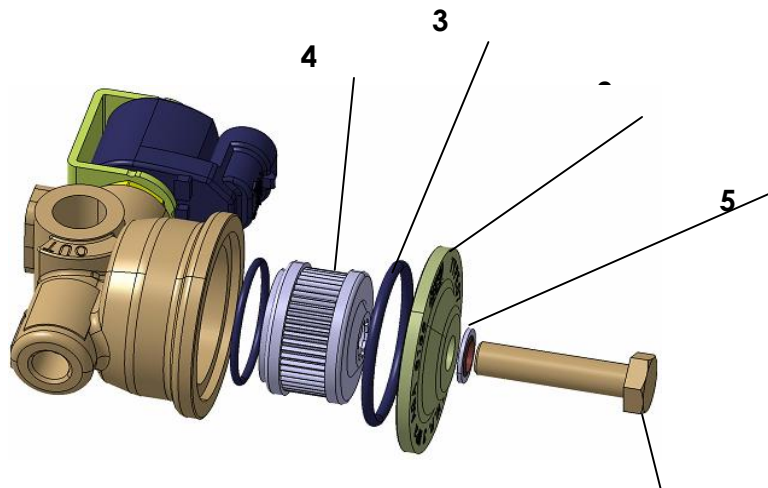


Maintenance kit for LPG liquid-phase filter

- A) paper cartridge;
- B) brown rubber o-ring \varnothing 34,52x3,53;
- C) thin black rubber o-ring \varnothing 26,7x1,78;
- D) metal/rubber washer \varnothing 17,4x24x1,5.

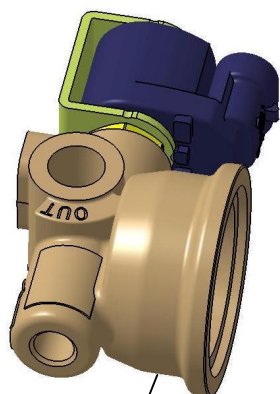


With an 13mm Allen wrench, un-tight the hex nut on top of the filter (1). When the screw is loose, pull away the steel cap (2) from the filter body. Now the brown rubber o-ring (3) at the base of the steel cup is exposed and can be removed. Blow away any eventual dust residue inside the filter body.



1 13 Allen wrench 6[Nm]

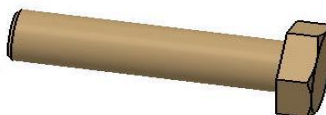
Slip off the used paper cartridge (4) from the long screw and discard it. You can now slip off the long screw from the steel cup: the sealing metal/rubber washer (5) on the base of the hex nut is now exposed and should be replaced with new one (D).



Filter body

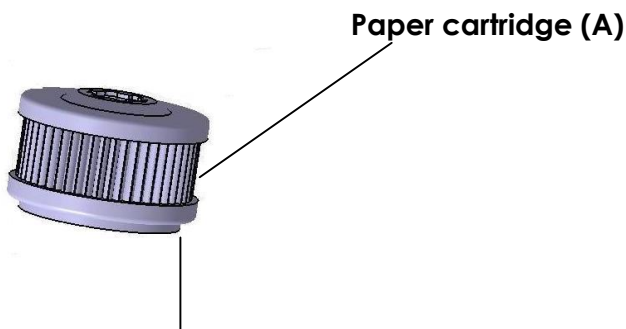


Steel cup



Long screw with 13mm hex nut

Take now the new paper cartridge (A) and fit the new black rubber o-ring (C) on the plastic circular seat, on the bottom of the cartridge.



Circular seat for Ø 26,7 o-ring (C)

Put now the new paper cartridge (A) into the steel cup, so its black rubber o-ring (C) will face the filter body; then push the long screw into the aluminium cup and thru the paper cartridge. Finally put in place the new brown rubber o-ring (B), at the base of the steel cup.

Now put the steel cup back in place, taking care to align the long screw with its threaded hole on the filter body. Use an 13mm Allen wrench to tighten the hex nut to 6Nm.